



BI-COLOR AMETHYST - Stark Raving Mad Cut

96 index gear • 10 mm x 16 mm • 9.7 carats

PAVILION

P1	43.00°	96-48		Cut to a center point
P2(G)	90.00°	96-48	24-72	Length to width can be changed
P3	68.00°	24-72		Cut to meet girdle

PAVILION - CONCAVE

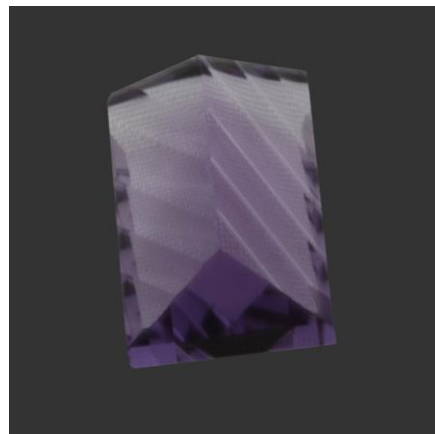
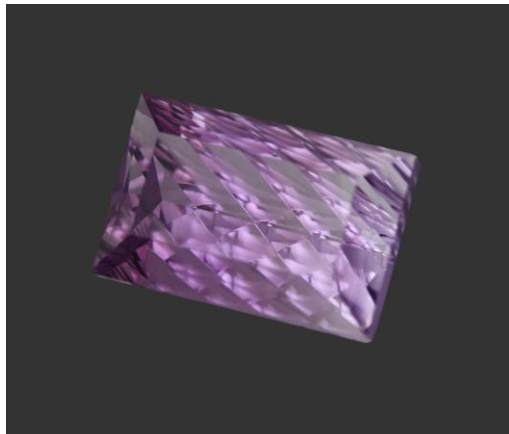
CC1	43.00°	96-48		
-----	--------	-------	--	--

Set machine at 45.00° and 0.0° on dial indicator. Center stone over mandrel. Using an 8 mm mandrel and 1,200 Diamond Paste, cut concaves in the stone approximately 3 mm wide. Cut 96 first, then 48. Move table 3 mm and repeat cutting. Rotate to 48. Continue until you run out of stone. Return table back to 0.0° on dial indicator and repeat steps in opposite direction.

CROWN

C1	42.00°	96-48	72-24	Cut to a level girdle
C2	36.00°	96-48	72-24	Cut to match C1 width
TABLE	00.00°			Table width should be just under 1/2 the width of the stone

This is an easy, basic cut. Any of the angles can be changed for the type of stone you are cutting. The table can also be changed from 45.00° to another angle and it will still have the same effect.



Authorized factory representative for Ultra Tec Faceting Machines, Equipment & Accessories